



VAODA

2025 JEEP® WRANGLER
JEEP® PERFORMANCE PARTS

Jeep®



HOW TO NAVIGATE

MENU

TOUCH/CLICK THE THREE-LINE MENU ICON IN THE TOP NAVIGATION BAR TO EXPLORE AVAILABLE CONTENT DESTINATIONS, SETTINGS AND HELP

TURNING PAGES

TOUCH/CLICK THE ARROWS ON EITHER SIDE OF THE BROCHURE

ZOOM

DOUBLE-TAP/CLICK TO ZOOM IN AND OUT OF THE BROCHURE

ALT TEXT

FOR ALTERNATIVE TEXT, PLEASE CLICK ON THE  ICON LOCATED ON EACH PAGE

VEHICLE ON COVER: JEEP® WRANGLER RUBICON® IN GRANITE CRYSTAL METALLIC FEATURES MESH SUNBONNET, TUBE DOOR KIT, TUBE DOOR MIRROR KIT, FRONT AND REAR GRAB HANDLES, JEEP® PERFORMANCE PARTS ROCK RAILS, 17-INCH BEADLOCK-CAPABLE WHEELS, JEEP PERFORMANCE PARTS OFF-ROAD BUMPER, GRILLE AND WINCH GUARD HOOP, WINCH GUARD LIGHT MOUNTING BRACKETS, AND 127-MM (5-INCH) OR 177-MM (7-INCH) LED OFF-ROAD LIGHT KITS



**WE BUILT IT.
WE KNOW IT.**

AS AN OWNER OF A NEW JEEP® WRANGLER, WE WANT TO SAY, CONGRATULATIONS. WE ALSO WANT TO WELCOME YOU TO MOPAR® – THE OFFICIAL SERVICE, PARTS AND CUSTOMER CARE PROVIDER FOR ALL JEEP BRAND VEHICLES. WHILE THAT’S OUR OFFICIAL ROLE, WE’RE BEST KNOWN FOR BEING THE ORIGINAL EQUIPMENT SUPPLIER FOR PARTS AND ACCESSORIES THAT LET YOU PERSONALIZE YOUR RIDE, BOOST YOUR VEHICLE’S PERFORMANCE OR TAKE ITS CAPABILITY TO THE NEXT LEVEL.

WE WELCOME YOU TO EXPLORE OUR SELECTION OF JEEP® PERFORMANCE PARTS AVAILABLE THROUGH YOUR LOCAL JEEP RETAILER OR ONLINE AT [MOPAR.CA](https://www.mopar.ca)

MOPAR® IS ORIGINAL EQUIPMENT

+ EXCLUSIVELY ENGINEERED AND DESIGNED to complement your vehicle without compromising its aesthetic, functionality and performance

+ FACTORY ORIGINAL EQUIPMENT must adhere to a strict standard of testing

+ WE ONLY USE HIGH-QUALITY MATERIALS because we know that our parts and accessories will impact the appearance, durability and value of your vehicle for years to come

+ ONLY MOPAR HAS DIRECT ACCESS to your vehicle’s precise specifications

+ EASY-AS-IT-CAN-BE INSTALLATION using existing openings and weld nuts for secure installation of most accessories, helping to protect the structural integrity of your vehicle



[INTRODUCTION](#)

[OFF-ROAD](#)

[WHEELS AND TIRES](#)

[TOPS](#)

[FLOOR MATS](#)

[INTERIOR](#)

[TOWING](#)

[EXTERIOR](#)

[EV](#)

[OFFERINGS](#)



VAODA



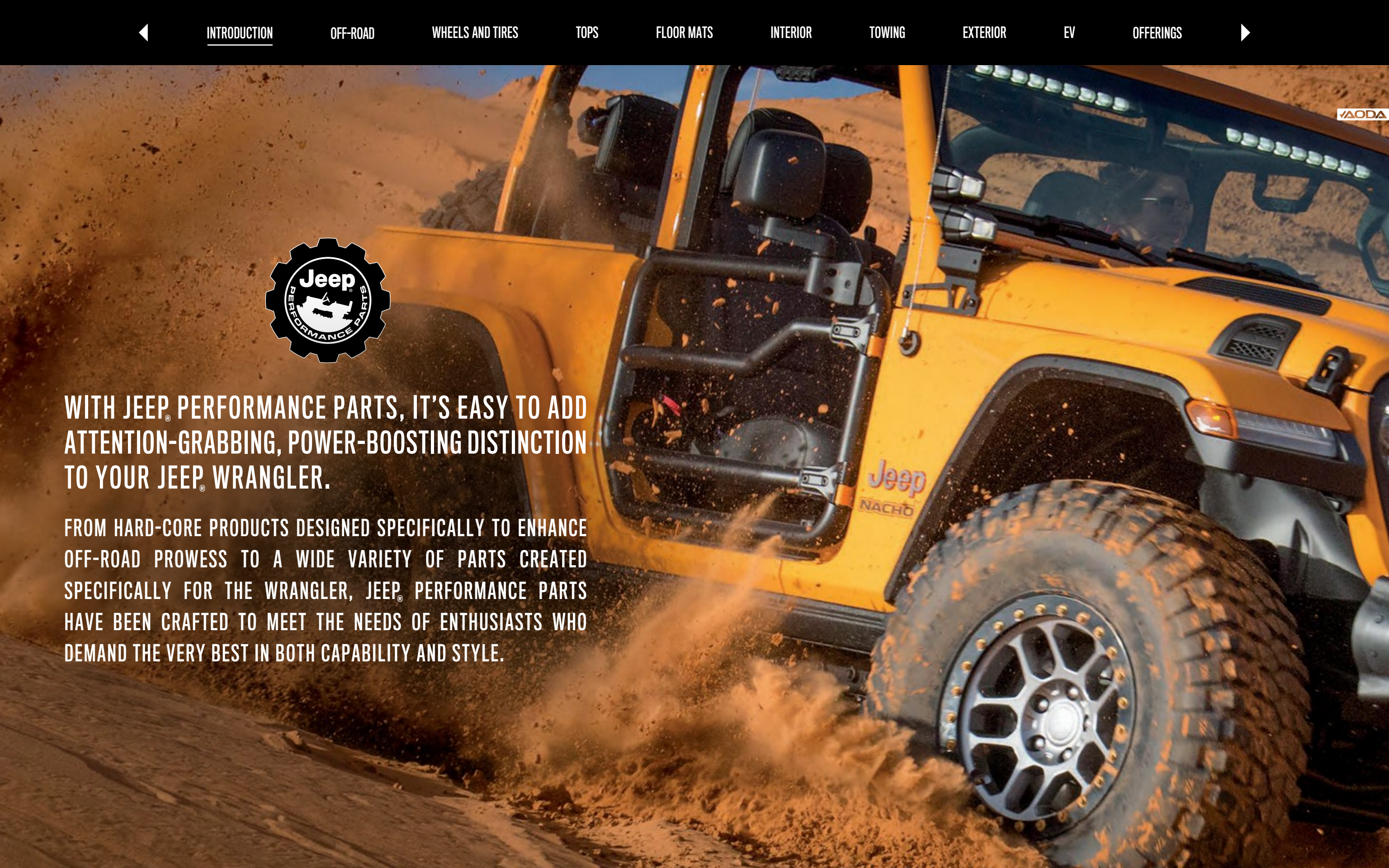
JEEP® PERFORMANCE PARTS

ENHANCING YOUR DREAM MACHINE



WITH JEEP® PERFORMANCE PARTS, IT'S EASY TO ADD ATTENTION-GRABBING, POWER-BOOSTING DISTINCTION TO YOUR JEEP® WRANGLER.

FROM HARD-CORE PRODUCTS DESIGNED SPECIFICALLY TO ENHANCE OFF-ROAD PROWESS TO A WIDE VARIETY OF PARTS CREATED SPECIFICALLY FOR THE WRANGLER, JEEP® PERFORMANCE PARTS HAVE BEEN CRAFTED TO MEET THE NEEDS OF ENTHUSIASTS WHO DEMAND THE VERY BEST IN BOTH CAPABILITY AND STYLE.





INTRODUCTION

OFF-ROAD

WHEELS AND TIRES

TOPS

FLOOR MATS

INTERIOR

TOWING

EXTERIOR

EV

OFFERINGS



VAODA



FOR BOLDER ADVENTURES

JEEP® WRANGLER RUBICON® IN HYDRO BLUE FEATURES TUBE DOOR KIT, TUBE DOOR MIRROR KIT, JEEP® PERFORMANCE PARTS ROCK RAILS, 17-INCH BEADLOCK-CAPABLE WHEELS WITH FUNCTIONAL BEADLOCK RINGS, GRILLE AND WINCH GUARD HOOP, FRONT GRAB HANDLES, 127-MM (5-INCH) OR 177-MM (7-INCH) LED OFF-ROAD LIGHT KITS, WINCH GUARD LIGHT MOUNTING BRACKETS AND LOWER A-PILLAR LIGHT MOUNTING BRACKETS



ILLUMINATE EVERY ADVENTURE

A. LED FOG LIGHT KIT.⁽¹⁾ Allows you to upgrade your halogen fog lamps to production LED lights which help to undercut inclement weather and minimize glare. They are designed specifically for your vehicle and provide an integrated look. For use on Jeep® Wrangler models with injection-moulded black bumper or with the Jeep® Performance Parts Off-Road Front Bumper. Kit contains left and right fog lamps, connectors and wiring harness.

[82215549 - Sport, Rubicon® or Jeep Performance Parts Off-Road Front Bumpers] [82215163 - Sahara®]

LED OFF-ROAD LIGHT KITS.⁽²⁾⁽³⁾ These rugged, commercial LED Off-Road Light Kits provide an exceptionally bright, fully illuminating light source needed for a safe off-road driving experience. Each light kit is pressure washer-capable, and the cast aluminum housing ensures proper heat dissipation and long-term durability. They are also vibration-, shock- and EMC-tested. Kits contain two LED lights, light covers and wiring harness with pigtail with ground eyelet and blunt cut circuit for power connection. Wiring harness works in conjunction with the Auxiliary Switch Bank.

B. 127-MM (5-INCH), 4,800 LUMEN. [82215385AC]

C. 177-MM (7-INCH), 8,000 LUMEN. [82215386AC]

AUXILIARY SWITCH BANK KITS. Include production switch bank switches, Power Distribution Centre (PDC), bracket, wiring harness, cubby bin, tie straps and splice kit. Switch Kits work in conjunction with the LED Off-Road Light Kits as well as most accessories that require a 12-volt power source.

D. CHROME. [82215798AF - Rubicon/Sahara]

E. BLACK. [82215190AF - Sport]

F. LOWER A-PILLAR LIGHT MOUNTING BRACKETS. Allow for mounting off-road lights to body. Brackets are steel with a black e-coat finish, attach to existing holes on the A-pillar cowl area and are compatible with the Snorkel Kit. **[82215427AB]**

All disclosures can be found on the last page.





LIGHT MOUNTING BRACKETS

A. BUMPER-MOUNT LIGHT BRACKETS. Allow for the mounting of off-road lights to front frames. Brackets mount to frame rails. Compatible with all bumpers. [82215428]

B. WINCH GUARD LIGHT MOUNTING BRACKETS. Allow for the mounting of off-road lights to the Grille and Winch Guard Hoop, sold separately. [82215351AA] Kit includes brackets for mounting the round 127-mm (5-inch) or 177-mm (7-inch) LED Off-Road Light Kits. [82215729]

TRIPLE HOOP GUARD

Designed to provide added protection to the front grille while out on the trail. Made exclusively for the Rubicon® Steel Front Bumper and installs easily to factory holes without any drilling or modifications to the bumper. The durable, black textured powder-coat finish matches the factory steel bumper, giving a subtle yet elevated look. [82216474AB]



LED OFF-ROAD LIGHT BARS⁽²⁾⁽³⁾

Made with an extremely durable, commercial-grade aluminum body, these kits have been rigorously tested in the field through vigorous shake and water pressure testing (IP69K rated). Output is 4,300 lumen. Each kit contains the 304-mm (12-inch) Light Bar, light covers featuring the Jeep® Brand logo, wiring harness and hardware. The wiring harness includes pigtail with ground eyelet and blunt-cut circuit for power connection. Both Light Bar styles work in conjunction with the Auxiliary Switch Bank Kits.



C. STAND-ALONE LIGHT BAR. Works in conjunction with Sport, Sahara® or Rubicon Front Bumpers. [82216473AB] Requires Bumper-Mount Light Brackets, sold separately. [82215428]

D. GRILLE GUARD WITH INTEGRATED LIGHT BAR. All one assembly. Works in conjunction with the Rubicon Steel Front Bumper. [82216457AC]



2-INCH LIFT KIT WITH BILSTEIN® SHOCKS⁽²⁾⁽⁴⁾ FOR ALL JEEP® WRANGLER MODELS

Legendary Jeep® 4x4 capability reaches new levels with an exceptional, no-compromise Lift Kit for Jeep Wrangler. It includes specially tuned Bilstein® 46-millimetre monotube shocks with remote reservoirs for cooler operation. The new Bilstein shocks complement increased ground clearance and larger wheels and tires by offering consistent, fade-free performance in all conditions. In addition, a self-adjusting, deflective-disc valve reacts instantly to surface changes, giving the driver maximum control. The parts are easy to install, as no driveshaft or brake-line replacements are required. Kit includes four springs, four Bilstein shocks with remote reservoirs, front lower control arms, front and rear stabilizer links, front and rear bump stops, assorted fasteners, Jeep® Performance Parts badge, and comes packaged in a custom, reusable wooden crate branded with the Jeep Brand and Jeep Performance Parts logos. [77072396AH - Two door, 3.6L V6 engine] [77072395AH - Four door, 3.6L V6 engine] [77072397AH - Two door, 2.0L Turbo engine] [77072430AH - Four door, 2.0L Turbo engine] [77072399AH - Four door, 3.0L EcoDiesel or 6.4L V8 engine] [77072522AE - Four door, 2.0L Turbo PHEV]



JEEP® PERFORMANCE PARTS 37-INCH TIRE-READY LIFT KITS⁽²⁾⁽⁴⁾ FOR JEEP WRANGLER 392 AND 4xe MODELS

The all-new turnkey 37-inch Tire-Ready Lift Kit Collection⁽²⁾⁽⁴⁾ is designed specifically for Wrangler 392 and 4xe owners who desire the enhanced capability that larger tires provide due to the increased tire radius. All parts are designed and validated to maintain the manufacturer warranty.

Collection includes the 2-inch Lift Kit with Bilstein (2.5-inch diameter) Reservoir Shocks, Tuned Steering Damper, High-Performance Front Brake Pad Kit (2 Rotors, 4 Pads), 17-inch Beadlock-Capable Wheels, Centre High-Mount Stop Light (CHMSL) Relocation Kit, Tire Pressure Monitors and Jack Base.

392 RUBICON® XTREME VEHICLES.
[77073008AA]



392 AND 4xe VEHICLES. Also includes Extended Taillamps, Fender Flare Extension, Rear Camera Extension Kit, Oversized Spare Tire Modification Kit, and Tailgate Reinforcement System.
[77073009AA - 392] [77073007AA - 4xe]





A. ONBOARD AIR COMPRESSOR. Made with powder-coated brackets to resist corrosion, this integrated compressor, conveniently located on the swing gate, lets you set the desired PSI and shuts off automatically when pressure is reached. The 7.6-m (25-foot) hose features dual outlets and can inflate two tires at once or connect to additional hoses to inflate four tires at the same time. [82216486AF]

B. FRONT BUMPER SKID PLATE. Designed to fit under the front bumper and is the same as the production Rubicon® Skid Plate. For use with the production steel front bumper or the Jeep® Performance Parts Off-Road Front Bumper. [82215183AB]

C. JEEP® PERFORMANCE PARTS HIGH-PERFORMANCE WINDSHIELD WIPER SYSTEM. Take windshield precision to the next level with our easy-to-install enhanced wiper system designed for both on- and off-road travel. Thanks to strategically placed openings, the system quickly floods the windshield through 12 streams of washer fluid from both blades. When the wipers are activated, the first stroke brings clarity by removing mud and grime quickly. Kit contains arms, blades and tubing required for initial installation, as well as one set of replacement blades. Fits 2018 - 2025 Jeep® Wrangler models. [PW100013AC]

DIFFERENTIAL COVER.⁽⁵⁾ (Not shown). Cast iron Differential Cover replaces existing differential cover to provide additional heavy-duty protection from trail damage. Features the Jeep Brand logo. Works in conjunction with the Dana 60® Axle Assembly. [P5160020]

All disclosures can be found on the last page.



OFF-ROAD EXTRAS

A. AXLE-BACK CORSA® 3.6L EXHAUST SYSTEM WITH DUAL CHROME TIPS.⁽⁵⁾ Carefully engineered to provide an aggressive sound under hard acceleration, eliminating drone while cruising all while providing maximum performance. Features 88-mm (3.5-inch) Polished Stainless Steel Tips and simplified installation utilizing all existing OEM mounting locations. [P5160244AA]

B. RUBICON® LOCKER WIRING HARNESS. Electric Locker Wiring Harness is 6 m (20 feet) long and has a two-wire connector. Power and ground are provided with the switch. This harness allows front or rear locking axle to be powered. [77072413]

C. RING AND PINION GEARS. Help maintain vehicle performance after larger tires are fitted. Specifically designed for your Jeep® Wrangler and go through rigorous testing to ensure peak performance and safety while maintaining strict FCA Canada Inc. quality requirements.
REAR SET. (Shown). 4:88 ratio for use on the Dana® M220 wide rear axle. [77072410]
FRONT SET. (Not shown). 4:88 ratio for use on the Dana M210 wide front axle. [77072409]

All disclosures can be found on the last page.



A

B

C



A. SNORKEL KIT.⁽⁶⁾ Directs cool air into the engine when driving through conditions that threaten normal air inlets. Designed to fit air boxes on 2.0L and 3.6L gasoline engines. Kit includes all necessary hardware and attachment brackets. [[82215350AD](#)]

B. COLD AIR INTAKE SYSTEM. Features Jeep Performance Parts logo and reusable black and silver drop-in filter. Draws fresh air from outside vehicle into hood cutout to increase engine performance. Available for 3.6L engines only and includes bezel to finish cutout. [[77072433AC](#)]

PRE-FILTERS. Improve the performance and extend the life of your filters. Designed to add increased protection by helping to remove dust and extremely fine particles prior to reaching existing filter systems. Both are made from cleanable, rugged, stainless steel mesh and feature black surrounds.

C. PERFORMANCE PRE-FILTER. Helps eliminate particles before they reach the production air box or Mopar Cold Air Intake System. Works with both the stock and Mopar Performance Filters. Fits Jeep Wrangler equipped with 2.0L or 3.6L engine. [[82216440AA](#)]

D. SNORKEL PRE-FILTER KIT. Dual-stage, two-piece Pre-Filter Kit for the air box. Includes a swappable snorkel cap for additional filtration for extremely sandy conditions. Fits Jeep Wrangler equipped with 2.0L or 3.6L engine. [[82216439AA](#)] Works with Mopar Snorkel Kit, sold separately. [[82215350AD](#)]

COLD AIR INDUCTION FILTER. (Not shown). Replacement High-Flow Air Filter designed to fit the Cold Air Intake System. Also a replacement for the production air filter. Washable. [[P5160245AA](#)]

All disclosures can be found on the last page.



A



B



C



D



TRUE OPEN-AIR FREEDOM

A. TUBE DOOR KITS.⁽²⁾⁽⁷⁾ Enjoy the breeze and sun while adding the feeling of security. Mopar® Tube Doors are constructed of 50.8-mm (2-inch) round steel tubes. Sold as a two door kit and four door kit. [77072496AC - Two door kit] [77072498AC - Four door kit]

B. TUBE DOOR MESH COVERS. Allow you to build half doors for your Jeep® Wrangler. The covers provide a half-door look, help keep the vehicle's contents in your cabin space and provide additional protection from the elements. For use with two door or four door Tube Door Kits. [77072563AA - Two door kit] [77072564AA - Four door kit]

C. TUBE DOOR MIRROR KIT. For use with Tube Doors. Kit includes left and right sideview mirrors, mounting brackets and hardware. [77072562AB]

D. DOORS-OFF MIRROR KIT. For use with doors off. These two separately mounted side mirrors may be quickly and easily installed for an enhanced rear view. Mirrors include a built-in breakaway feature that prevents damage while in tight spaces on the road or trail. Mounting brackets are finished with an anticorrosion undercoat and durable black powder-coat finish. Installation is simple, no special tools required. Kit includes left and right sideview mirrors, mounting brackets and hardware. [82215331AC]

E. MIRROR STORAGE BAG. Helps protect and store your Doors-Off or Tube Door Mirror Kits when not in use. Bag is made of a durable black fabric featuring the Jeep Brand logo and conveniently stores two sideview mirrors with body-mounting brackets assembled. [82216528AA]

All disclosures can be found on the last page.



A

C

D

B

E

[INTRODUCTION](#)[OFF-ROAD](#)[WHEELS AND TIRES](#)[TOPS](#)[FLOOR MATS](#)[INTERIOR](#)[TOWING](#)[EXTERIOR](#)[EV](#)[OFFERINGS](#)

OFF-ROAD OUTFITTING

JEEP® WRANGLER RUBICON® IN HYDRO BLUE FEATURES KATZKIN® LEATHER SEAT COVERS, SNORKEL KIT, COLD AIR INTAKE SYSTEM, TUBE DOOR KIT, TUBE DOOR MIRROR KIT, JEEP® PERFORMANCE PARTS ROCK RAILS, 17-INCH BEADLOCK-CAPABLE WHEELS WITH PAINTED FUNCTIONAL BEADLOCK RINGS, GRILLE AND WINCH GUARD HOOP, FRONT AND REAR GRAB HANDLES, 127-MM (5-INCH) OR 177-MM (7-INCH) LED OFF-ROAD LIGHT KITS, LOWER A-PILLAR LIGHT MOUNTING BRACKETS AND WINCH GUARD LIGHT MOUNTING BRACKETS



MAKE IT UNIQUELY YOURS

A. RUBICON® ROCK RAILS. Constructed of black powder-coated, heavy-gauge steel to help absorb impact and protect lower bodyside panels while off-roading. Same as production Rubicon® Rock Rails. [82215128 - Two door] [82215126 - Four door]

B. JEEP® PERFORMANCE PARTS ROCK RAILS. Designed to meet the demands of the off-roader and provide added vehicle body protection. They are fabricated using zinc-coated steel for superior corrosion resistance and are roll-formed. The outer surface is e-coated and powder-coated, providing superior protection and durability. [82215129AC - Two door] [82215165AC - Four door]

C. RUBICON HOOD PACKAGE. Same as the production Rubicon hood. Package includes the hood, air inlet bezels, silencer pad and hardware. The hood comes primed and ready to paint. [82215373AD]

All disclosures can be found on the last page.





JEEP® PERFORMANCE PARTS OFF-ROAD BUMPER, FRONT

Designed to take on whatever the trail can throw at it. Wide enough to provide fender protection but is narrower than the production bumper. Heavy-duty design is rigorously tested for performance, durability and corrosion. Bumper is steel e-coated and black powder-coated with D-rings for extra towing capability. [82215691AD]

RUBICON® STEEL BUMPERS, FRONT

Steel-reinforced and winch-capable. Equipped with red Tow Hooks. Removable ends allow conversion to a high-clearance, narrow-profile bumper. Choose long or short configuration. Three-piece bumper comes equipped with Fog Lights. One-piece bumper must be used with the production Front Bumper Skid Plate, sold separately. [82215121AH - Three-piece assembly] [82215120AE - One-piece assembly] [82215115AB - Front bumper end caps]



RUBICON STEEL BUMPER, REAR⁽⁸⁾

Rear off-road bumper, same as production, matches the Rubicon® Steel Front Bumper. Bumper is steel with black e-coat finish. [82215342AE]





MAP OUT YOUR STRATEGY

ADDING BIGGER TIRES AND WHEELS TO YOUR JEEP® WRANGLER CAN REQUIRE ADDITIONAL MODIFICATIONS. BE SURE YOU UNDERSTAND HOW EQUIPMENT UPGRADES WILL AFFECT OTHER COMPONENTS AND CAREFULLY PLAN OUT YOUR BUILD.



1 LARGER TIRES

Whether you're in the mud or on the rocks, larger tires are designed to give you a better off-road experience.

2 OFF-ROAD WHEELS

Just like larger tires better connect to the terrain, off-road wheels help improve handling, acceleration, braking, traction and steering.

3 HIGHER FENDER FLARES

Allow you to upgrade to larger wheels and install Lift Kits without experiencing tire interference in the wheel well.

4 2-INCH LIFT KIT⁽²⁾⁽⁴⁾

A Lift Kit gives additional clearance to help your Jeep Wrangler better navigate off-road terrain and clear even more challenging obstacles.



ADDITIONAL ACCESSORY REQUIREMENTS

OVERSIZED SPARE TIRE MODIFICATION KIT

TAILGATE REINFORCEMENT SYSTEM

CENTRE HIGH-MOUNT STOP LIGHT (CHMSL) RELOCATION KIT (OPTIONAL)



MODIFY FROM THE ROAD UP



A. CENTRE HIGH-MOUNT STOP LIGHT (CHMSL) RELOCATION KIT. Allows you to add a larger tire on the spare tire mount and move the CHMSL to the centre of the spare tire. Can be used with the Oversized Spare Tire Modification Kit and/or Tailgate Reinforcement System. **[82215349AB]**

B. OVERSIZED SPARE TIRE MODIFICATION KIT. Mounts to the swing gate and is adjustable to hold larger tires and wheels. Carrier is painted a corrosion-resistant black finish. Requires Tailgate Reinforcement System, sold separately. **[82215355AC]**

C. TAILGATE REINFORCEMENT SYSTEM. Allows for larger tires to be mounted on the swing gate. Reinforcement is powder-coated black and works with production hinge for easier installation. Must be used with the Oversized Spare Tire Modification Kit, sold separately. **[82215356AC]**

JEEP® WRANGLER RUBICON® IN FIRECRACKER RED FEATURES CENTRE HIGH-MOUNT STOP LIGHT RELOCATION KIT, OVERSIZED SPARE TIRE MODIFICATION KIT, TAILGATE REINFORCEMENT SYSTEM, SNORKEL KIT, COLD AIR INTAKE SYSTEM, TUBE DOOR KIT, TUBE DOOR MIRROR KIT, FRONT AND REAR GRAB HANDLES, JEEP® PERFORMANCE PARTS ROCK RAILS AND 17-INCH BEADLOCK-CAPABLE WHEELS WITH FUNCTIONAL BEADLOCK RINGS





HEAVY-DUTY PROTECTION



THERE'S NO CONTROLLING MOTHER NATURE ON THE TRAIL, BUT JEEP® WRANGLER OWNERS CAN DECIDE HOW THEIR VEHICLES' INTERIOR WEATHERS WHAT IS THROWN AT THEM. OPT FOR THE NEWEST HEAVY-DUTY ACCESSORIES AVAILABLE FROM JEEP® PERFORMANCE PARTS AND MOPAR®. THESE DURABLE ACCESSORIES PROVIDE THE ULTIMATE LEVEL OF SURFACE PROTECTION AND HELP MAKE POST-ADVENTURE CLEANUP EASIER.

JEEP® PERFORMANCE PARTS HEAVY-DUTY VINYL SEATS. Katzkin® vinyl provides surface protection against the most extreme conditions, including water, mildew, scuffs, tears, fading and even the most unpredictable elements – kid spills! Available in Black with an embroidered Jeep Wrangler grille and stitching in Light Tungsten. [Sales Code: CBU]

JEEP PERFORMANCE PARTS HEAVY-DUTY FLOORING SYSTEM. Made to cover the entire floor, this system boasts multi-layer construction that delivers thermal protection, sound dampening and a rugged surface suited for any potential situation. The design incorporates water removal via integrated floor drains for easy cleaning. Available in black. [Sales Code: CKJ] [82216498AC - Retail]





UP-FRONT ARMOUR

WHEN HEADING OFF-ROAD, IT MAY BE PRUDENT TO INCREASE THE UTILITY AND STRENGTH OF YOUR JEEP® WRANGLER, ESPECIALLY THE FRONT AND REAR BUMPERS. YOU'LL ADD VITAL PROTECTION, IMPROVE APPROACH AND DEPARTURE ANGLES, AS WELL AS INCREASE YOUR ABILITY TO MANOEUVRE THROUGH TIGHT SPACES. BE SURE YOU UNDERSTAND HOW EQUIPMENT UPGRADES WILL AFFECT OTHER COMPONENTS AND CAREFULLY PLAN OUT YOUR BUILD.

GRILLE AND WINCH GUARD HOOP. Designed for both form and function. Constructed with 50.8-mm (2-inch), black powder-coated steel, the rugged guard helps protect the grille from damage while off-roading. The tubular grille guard is designed to specifically match the contours of the vehicle's front grille and bumper for a cohesive appearance. Better yet, the piece bolts to the production steel front bumper with no drilling or alteration of the bumper. [82215351AA]

RUBICON STEEL FRONT BUMPERS. Steel-reinforced and winch-capable. Equipped with red Tow Hooks. Removable ends allow conversion to a high-clearance, narrow-profile bumper. Choose long or short configuration. Three-piece bumper comes equipped with Fog Lights. One-piece bumper must be used with the production Front Bumper Skid Plate, sold separately. [82215121AH - Three-piece assembly] [82215120AE - One-piece assembly] [82215115AB - Front bumper end caps]

EXCLUSIVE JEEP® PERFORMANCE PARTS RUBICON® WINCH.⁽⁶⁾ Completely waterproof and submersible to ensure reliable operation during water fording⁽⁶⁾ and other adverse conditions. Includes 30.4 m (100 feet) of WARN® Spydura® Synthetic Rope (the strongest, most feature packed synthetic rope on the market today). Finished in three-stage zinc phosphate, e-coat and powder-coating. Fasteners treated with anticorrosive Magni 565 coating. Requires the Winch Mounting Kit, sold separately, and should be paired with the Front Bumper End Caps. [P5160095AC]

WINCH MOUNTING KIT. Designed to fit on the Rubicon® Steel Front Bumper and Mopar® Front Bumper Assembly. [82215182AD]

FAIRLEAD ADAPTER PLATE FOR CENTRED WINCH. Application for centred winch products. Mates with Winch Mounting Kit and designed to fit on the Rubicon Steel Front Bumper and Mopar Front Bumper Assembly. [82215528AB] Also available for off-centre winch. [82215527AB]

FAIRLEAD. Included in the Jeep® Performance Parts Rubicon Winch Kit.





TRAILBLAZING TO THE TOP

MOPAR® AND THE JEEP® BRAND HAVE A LONG, ADVENTUROUS, HISTORY OF DEVELOPMENT AND DISCOVERY TOGETHER. SINCE 2002, ENGINEERS AND DESIGNERS FOR BOTH BRANDS HAVE BEEN BANDING TOGETHER TO CREATE CUSTOMIZED VEHICLES FOR TESTING AT THE LEGENDARY PROVING GROUNDS OF MOAB, UTAH, HOME OF SOME OF THE WORLD'S MOST CHALLENGING OFF-ROAD TRAILS.

HERE, DURING THE ANNUAL EASTER JEEP SAFARI®, HUNDREDS OF LIKE-MINDED OFF-ROAD ENTHUSIASTS FROM ALL OVER ARE TREATED TO AN UP CLOSE AND PERSONAL LOOK AT SOME OF THE COOLEST CONCEPT VEHICLES EVER TO TAKE TO THE TRAIL. THESE EXPERIENCED GEARHEADS KNOW WHAT TO LOOK FOR WHEN IT COMES TO OFF-ROAD ACCESSORIES AND ARE ALWAYS EAGER TO PROVIDE MOPAR ENGINEERS WITH VALUABLE FEEDBACK. MOPAR MAKES GOOD USE OF THIS HELPFUL INSIGHT, USING IT TO MOVE FORWARD AND DEVELOP NEW JEEP® PERFORMANCE PARTS THAT MEET THE NEEDS OF OFF-ROAD ENTHUSIASTS WHO DEMAND THE VERY BEST IN CAPABILITY AND STYLE.





**17-INCH SLOTTED
OFF-ROAD WHEEL⁽⁹⁾**
[77072494AB]



**17-INCH SILVER
OFF-ROAD WHEEL⁽⁹⁾**
[77072472AB]



**17-INCH BLACK
OFF-ROAD WHEEL⁽⁹⁾**
[77073002AA]



**17-INCH GEAR DESIGN
OFF-ROAD WHEEL⁽⁹⁾**
[77072471AB]



**17-INCH BEADLOCK-
CAPABLE WHEEL⁽⁹⁾**
[77072585AA]



FUNCTIONAL BEADLOCK RING KIT⁽²⁾⁽¹⁰⁾
Shown on 17-inch Beadlock-Capable Wheel.
[77072586AA - BFGoodrich® tire]
[77072599AA - Falken® tire]



**17-INCH PRODUCTION RUBICON®
WHEEL WITH UNIQUE SATIN
CARBON FINISH⁽⁹⁾**
[82215802]



**17-INCH BEADLOCK-
CAPABLE WHEEL⁽⁹⁾**
[77072494AB]



FUNCTIONAL BEADLOCK RING KIT⁽²⁾
Shown on 17-inch Beadlock-
Capable Wheel.
[P5160154AA]

WHEELS





[82215430AB]



[82215440AB]



[82215441AB]



[82215446AB]



[82215438AB]



[82215447AB]



[82215434AB - 32-inch]
[82215708AB - 33-inch]



[82215444AB]



[82215967]



[82215431AB]



[82215432AB]

SPARE TIRE COVERS

Personalize and protect! Mopar® offers a variety of themed designs for your Jeep® Wrangler Spare Tire Cover.





JEEP® BRAND LOGO VALVE STEM CAPS

Available as a set of four.
[82213628AB - Silver] [82214622 - Black]

WHEEL LOCKS

Include five lug nuts and a special-fitting key.
[82215711AA - Silver] [82216386AA - Black]



MOPAR® BRAND LOGO VALVE STEM CAPS

Available as a set of four.
[82215721 - Black with Blue logo] [82215722 - Black with Silver logo]



INTRODUCTION

OFF-ROAD

WHEELS AND TIRES

TOPS

FLOOR MATS

INTERIOR

TOWING

EXTERIOR

EV

OFFERINGS



VAODA



PURPOSE-BUILT FOR AN EXACT FIT

JEEP® WRANGLER SAHARA® IN BRIGHT WHITE FEATURES BLACK TUBULAR SIDE STEPS, BLACK OFF-ROAD WHEELS, COMPASS SPARE TIRE COVER, FREEDOM EDITION STAR HOOD GRAPHIC, MESH SUNBONNET AND BLACK FUEL-FILLER DOOR

**A****B****C**

TOP-NOTCH OPTIONS

A. MESH SUNBONNET,⁽¹¹⁾⁽¹²⁾ Offers partial protection from the sun while allowing the open-air feel. [82219168AA - Two door] [82219167AA - Four door]

B. SUNBONNET,⁽¹¹⁾⁽¹²⁾ Preserves the open-air feel while providing protection from the sun. Made with durable, high-quality soft top material. Available for hardtop (without door frame). [82219170AA - Two door] [82219169AA - Four door]

C. SUNRIDER® FLIP TOP FOR HARDTOP,⁽¹¹⁾⁽¹²⁾ Look up to see more of the sun, sky and stars. Made with premium materials that allow for year-round use, the Sunrider® Flip Top for Hardtop replaces the Freedom Panels with a soft top that can easily open – and close – in seconds. [82216370AB]

All disclosures can be found on the last page.



UP TOP



STANDARD HARDTOP

Features tinted glass, side quarter window, glass liftgate, rear wiper and defroster.

BLACK TEXTURED HARDTOP

[82215140AB - Two door] [82215142AB - Four door]

PAINTABLE HARDTOP

[82215141AB - Two door] [82215143AB - Four door]



SUNRIDER® PREMIUM ACRYLIC SOFT TOP

Opt for this soft top when your off-roading takes you where extreme weather is a dominating factor. Dark interior material with dobby backing design.

BLACK WITH WINDOW TINT

[82215147AB - Two door] [82215146AB - Four door]

TAN WITH WINDOW TINT

[82215914AB - Four door]

BLACK WITHOUT WINDOW TINT

[82215916AB - Four door]



SUNRIDER BLACK VINYL SOFT TOP

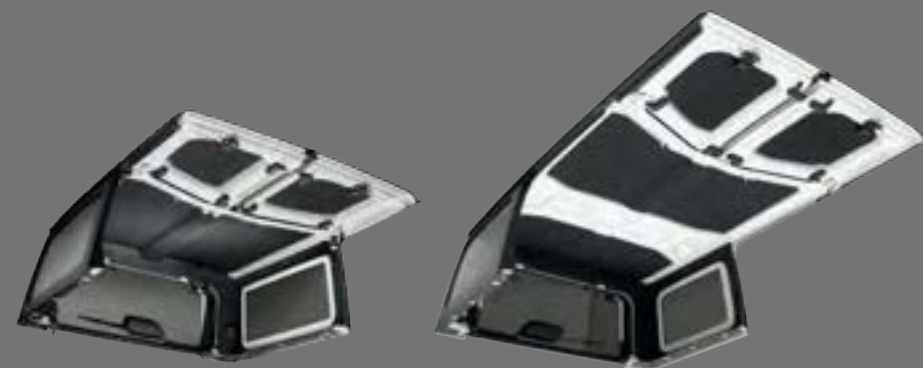
Light interior material.

BLACK WITH WINDOW TINT

[82215806AB - Two door] [82215805AB - Four door]

BLACK WITHOUT WINDOW TINT

[82215915AB - Four door]



HARDTOP ADD-ONS

HARDTOP HEADLINER

Helps boost efficiency of air conditioning and reduce road noise. Provides a clean, finished appearance with 12.7-mm (1/2-inch)-thick, non-woven cushioning and finished edges.

[82215132AE - Two door] [82215133AF - Four door]

HARDTOP WIRING KIT (Not shown).

Enables hardtop installation on vehicles equipped with production soft top and heated steering wheel. Kit includes multifunction switches, HVAC control, dual outlet washer pump, washer hose connector kit, check valve and wiring harness with washer hose. [82215312AF]



A



B



C



D



E

PREMIUM CARPET FLOOR MATS. In black. Front mats feature the Jeep® Brand logo.

A. TWO DOOR. [82215200AC]

B. FOUR DOOR. [82215201AC] [82216074 - PHEV]

ALL-WEATHER FLOOR MATS. High-wall, bucket-style to provide maximum coverage and protect your floor from wetness, snow, mud, dirt and grime. Available in black and feature a terrain-style design and the Jeep Brand logo. The front mats are designed to fit the vehicle floor drain holes to allow for draining without removing the mat. Each mat features nibbed backing and grommets for retention posts to keep them in place.

C. TWO DOOR. [82216625AB]

D. FOUR DOOR. [82216623AB]

[82216624AB - PHEV]

E. MOULDED CARGO TRAY. Protects your carpet and leather seats from mud, dirt, grease and grime. Constructed from a durable, skid-resistant rubber and moulded to fit the exact contours of the cargo area. Kit includes the cargo tray and a seatback cover to protect the back of your leather seats. Features the Jeep Brand logo and removes easily for cleaning. The cloth seat version includes an additional carpeted gap hider with metal mounting brackets.

[82216626AB - Leather seats]

[82216627AB - Cloth seats] [82216628AB - PHEV]

DOOR SILL GUARDS. Additional protection against scratches and scuffs. They feature an etched honeycomb background and Wrangler logo on the front-door guards.

F. STAINLESS STEEL. [82215395 - Two door]

[82215396AB - Four door]

G. BLACK PLASTIC. [82215393 - Two door]

[82215394 - Four door]



F



G



INTRODUCTION

OFF-ROAD

WHEELS AND TIRES

TOPS

FLOOR MATS

INTERIOR

TOWING

EXTERIOR

EV

OFFERINGS



RAM

KATZKIN[®] LEATHER INTERIORS

Handcrafted and professionally designed leather-trimmed interior options. Shown in Black with an Ash (light grey) accent colour and features the Rubicon[®] logo and contrast stitching in Surf Blue. Ask your retailer for more information.



TRAVEL MORE SECURELY

A. CARGO NET. Black nylon net fastens to tie-down loops to help keep loose items secure. [82215379]

B. CARGO TUB. Provides additional storage underneath the floor. Removable, lightweight and easy to clean. [82215669AC]

C. REAR-SEAT DOG PARTITION. Black, durable, nylon net fastens to tie-down loops to create a barrier to keep your pet safely restricted to the cargo area. [82215378AB]

D. PET KENNEL. Secures to vehicle using four tie-down straps. Stores flat when not in use. [82213729AC]



A

C

B

D



ACCESSORIZE FOR ADVENTURE

A. JEEP PERFORMANCE PARTS MULTI-ACCESSORY RAIL. Keep travel essentials like your phone, action camera and other devices secured and organized with our Jeep® branded dash-mounted accessory rail. The design allows for optimized camera placement to capture trail excursions and off-road adventures. This easy-to-install rail is made of durable powder-coated aluminum, secured via eight TORX® screws, and is a just-right 500 mm in length. [82219127AB]

B. STORAGE BAG. Black storage bag featuring the Jeep Brand logo on the front with panel zipper access, front pocket, inside pockets and straps for organization. [82215910]

C. TAILGATE TABLE. Durable metal table fashioned after the iconic Jeep grille includes mounting hardware for easy attachment to back side of trim panel. Not available for vehicles equipped with the Trail Rail™ System. [82215416AD]

D. CARGO TOTE. Features snap-in dividers for modular storage and the Jeep Brand logo. [82208566]

A



B



C



D

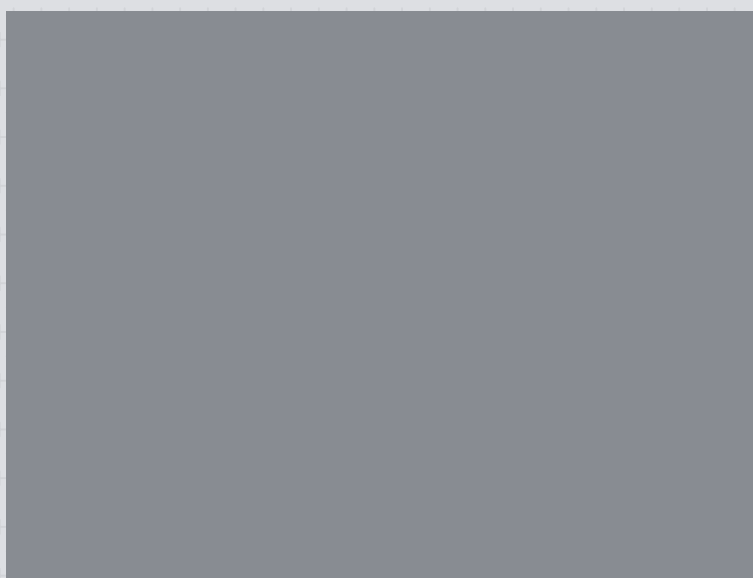


REMOTE START*

Hit the ground running with the ability to start your vehicle from a distance with the touch of a button. The system operates seamlessly with your vehicle's factory electronic security system.

[82214660AE]

* Consult provincial and local laws on use of remote starters.



A. JEEP® PERFORMANCE PARTS TOOL KIT. Whether it's repairs at home, on the trail or in the shop, this 83-piece professional-grade tool kit has a wide variety of provisions for optimal job coverage for your Jeep® Wrangler. The kit includes a heavy-duty 1200 denier Jeep® Performance Parts canvas attaché tool bag which is water-resistant, has self-repairing zippers and has reinforced webbing for strength and durability. This tool kit has the tools you'll need for on-road and off-road adventures in your Jeep Brand vehicle. [82219119AA]

B. ROADSIDE SAFETY KIT. Includes safety flashlight, fleece blanket, 6-gauge jumper cables, safety triangle, flathead and Phillips screwdrivers, pliers, two bungee cords and gloves. [82213499AB]

C. JACK BASE. Provides a safe and secure support for traditional scissor jacks and increases the tire size that your jack can service to 37 inches or more. Convenient design includes built-in compartment to store your lug nut/lock key and allows it to fit into any rear floor compartment. [82215637AB]

D. FIRST AID KIT. Includes ice packs, gauze pads, alcohol wipes, bandages, first aid tape, tongue depressors, vinyl gloves, antiseptic wipes, scissors, tweezers, first aid instructions and more. [82215912]

E. ROADSIDE ASSISTANCE KIT. Includes branded leather gloves, multi-bit screwdriver, pliers, two 1-m (40-inch) black bungee cords, roll of 50.8-mm (2-inch) duct tape, 8-gauge 3.6-m (12-foot) jumper cables, LED headlamp, electronic flare, plus all necessary batteries. [82215913]





Properly secure all cargo. Always tow within the vehicle's capacity.



TOWING MADE EASY

A. RV TOW WIRING HARNESS.⁽¹³⁾ Enables towing a Jeep® Wrangler JL model behind a truck or RV. Allows for running, turn signals and brake lights on the vehicle being towed. [82216358AB]

B. HITCH RECEIVER.⁽¹³⁾ This Class II Hitch Receiver has a 1,587-kg (3,500-lb) towing capacity with 158-kg (350-lb) tongue weight capacity. It requires no trimming or cutting of the rear bumper or fascia when installing and is the same as the production hitch. The Jeep Brand Logo Hitch Receiver Cover is also included. [82215209]

C. BALL MOUNT ADAPTER.⁽¹³⁾ Designed for a 2-inch Hitch Receiver. [82213547 - 50.8-mm (2-inch) Drop] [82213548 - 101-mm (4-inch) Drop]

D. HITCH BALL, CHROME.⁽¹³⁾ Forged steel with a chrome finish. [82213565 - 2-inch Diameter, 1-inch Shank] [82213563 - 1 7/8-inch Diameter, 1-inch Shank]

E. HITCH RECEIVER COVERS. Protects vehicle's hitch opening from the elements. Includes a retention strap and features the Jeep Brand logo or Mopar® Brand logo. [82213706 - Jeep Brand logo] [82208453AB - Mopar Brand logo]

All disclosures can be found on the last page.



A

B

C, D

E



Properly secure all cargo. Always tow within the vehicle's capacity.

TAKE IT TO THE LIMIT

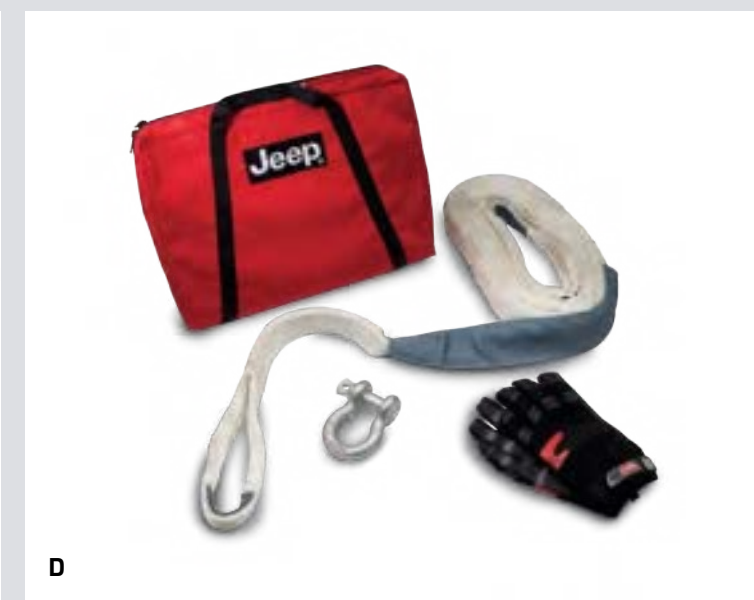
A. TRAILER TOW WIRING HARNESS.⁽¹³⁾ Permits operation of the trailer LED and incandescent taillamps, providing all the functions of the standard 7-pin trailer connector (stop, left and right turn, Reverse, Park, 12-volt battery and brake). Kit includes under-dash brake output circuit, all necessary hardware and complete installation instructions. [**82216359AA**]

B. TRAILER BRAKE CONTROLLER.⁽¹³⁾ This proportional-based controller provides smooth, comfortable braking while extending the life of your vehicle's brakes. It's compatible with both electric and electric-over-hydraulic trailer brakes, up to three axles. Brake Controller is integrated into the vehicle's centre stack for ease of operation. [**82215652AD**]

C. TRAILER BRAKE CONTROLLER INSTALLATION HARNESS.⁽¹³⁾ Only required on the Jeep® Wrangler JL model when the vehicle is not equipped with the Trailer Tow Group. Works in conjunction with the Trailer Brake Controller. [**82216416AA**]

D. TOW STRAP KIT. Gives the tow vehicle extra leverage when extracting stuck vehicles. Comes with a 6.7-m (22-foot), 8,164-kg (18,000-lb) tensile strength tow strap, two 19-mm (3/4-inch) D-rings, a carabiner and a pair of Jeep Brand gloves, all in a heavy-duty red nylon bag featuring the Jeep Brand logo. [**82213901AD**]

All disclosures can be found on the last page.





STYLED WITH SUBSTANCE

1941 SWOOSH BODYSIDE GRAPHIC

Includes driver and passenger side.

TWO DOOR
[82215731]

FOUR DOOR
[82215733]



MOAB MOUNTAIN BODYSIDE GRAPHIC

Includes driver and passenger side.

TWO DOOR
[82215732]

FOUR DOOR
[82215730]



ADDING MORE PERSONALITY

MOPAR® OFFERS A VARIETY OF UNIQUE GRAPHICS TO EXPRESS YOUR INDIVIDUALITY AND PERSONALIZE YOUR JEEP® WRANGLER. DESIGNED AND TESTED SPECIFICALLY FOR YOUR VEHICLE. THESE GRAPHICS ARE MADE OF FADE- AND WEATHER-RESISTANT VINYL AND INCLUDE A LAYER OF LAMINATE TO PROTECT THE GRAPHIC AND YOUR VEHICLE. PROFESSIONAL INSTALLATION RECOMMENDED.

A. JEEP® PERFORMANCE PARTS BODYSIDE GRAPHIC.
Includes driver and passenger side. [82216407AA]

B. 1941 HOOD GRAPHIC. [82215734]

C. FREEDOM EDITION STAR HOOD GRAPHIC. [6AG94RXFAA]



B

C

[INTRODUCTION](#)[OFF-ROAD](#)[WHEELS AND TIRES](#)[TOPS](#)[FLOOR MATS](#)[INTERIOR](#)[TOWING](#)[EXTERIOR](#)[EV](#)[OFFERINGS](#)

AN ALL-AROUND HERO

JEEP® WRANGLER RUBICON® IN MOJITO FEATURES TUBE DOOR KIT, TUBE DOOR MIRROR KIT, JEEP® PERFORMANCE PARTS ROCK RAILS, 17-INCH BEADLOCK-CAPABLE WHEELS WITH FUNCTIONAL BEADLOCK RINGS, GRILLE AND WINCH GUARD HOOP, FRONT GRAB HANDLES, 127-MM (5-INCH) OR 177-MM (7-INCH) LED OFF-ROAD LIGHT KITS, WINCH GUARD LIGHT MOUNTING BRACKETS AND LOWER A-PILLAR LIGHT MOUNTING BRACKETS



STEP UP

SIDE STEPS

Provide function and style. Feature a skid-resistant stepping surface, to prevent slipping, that extend from the front wheel to the rear wheel. These steps are installed to the underbody and utilize the same brackets and hardware as the production side steps version.

A. SIDE STEPS.

[82215145AB - Two door]

B. BLACK TUBULAR SIDE STEPS.

[82215328AB - Two door] [82215327AB - Four door]

C. CHROME TUBULAR SIDE STEPS.

[82215330AB - Two door] [82215329AB - Four door]



A



B



C



D



E

LICENCE PLATE FRAMES. Stainless steel licence plate frames in polished or black finish, with or without the Jeep® Brand logo. Kits also include Jeep Brand logo valve stem caps and logo key chain.

A. POLISHED. [82213251AB - with logo]

[82213249AB - without logo]

B. POLISHED KIT. [82215852]

C. BLACK. [82213252AB - with logo]

[82213250AB - without logo]

D. BLACK KIT. [82215853]

E. JEEP® PERFORMANCE PARTS BADGE. Premium forged aluminum badge is black with silver image and text, featuring the Jeep® Performance Parts logo against a gear-shaped background. [82215764]

F. LOCKING FUEL CAP. Guards against theft or contamination of fuel. Includes quarter-turn locking gas cap and two keys. [05278655AB] Version-coded to the ignition key also available. [82215184AB]

FUEL-FILLER DOORS. Constructed from cast aluminum, featuring the Jeep Brand logo.

G. SATIN CHROME. [82215122]

H. BLACK POWDER-COAT. [82215123AB]



F



G



H



PROTECT AND SERVE



A. WINDSHIELD TIE-DOWN STRAPS. Keep your Jeep® Wrangler windshield secure and in place. Feature a protective black e-coat finish to make them durable enough to withstand any obstacle you might meet on the trail. [82215717]

B. BLACK TAILLAMP GUARDS. Make a stylish impact around town with added off-road protection. Available for Sport models equipped with halogen lamps. [82215130AB]

C. PARKING COVER. Protects the interior from rain, dust, dirt and debris when the top is off and doors are on or off. Quick and easy to install. Features the Jeep Brand logo. [82215371 - Two door]
[82215370 - Four door]

D. WINDSHIELD SUNSHADE. Deflects the harsh rays of direct sun to keep your dashboard and interior degrees cooler. Custom-made for the Jeep Wrangler, this indispensable shade folds for easy storage. Features the Jeep Brand logo. [82203133AB]



A



B



C



D



A



B



C



D



E

A. FRONT AIR DEFLECTOR. Deflects road debris, dirt and insects away from vehicle's hood and windshield. Available in tinted smoke. [82215367AB]

B. MIRROR REPLACEMENT KIT. Production exterior manual mirror kit. Kit includes two manual exterior rearview mirrors with black housing. Does not work with the Tube Door or Doors-Off Mirror Kits. [82215138]

MOULDED SPLASH GUARDS. Designed to provide excellent lower-body protection by minimizing the spray of water, mud, snow and rocks. Fit front and rear wheel wells of the Jeep® Wrangler Sahara® or Sport. Front Splash Guards do not fit vehicles equipped with Rock Rails.

C. FRONT. [82215332AC] [82216082 - PHEV]

D. REAR. [82215333AB] [82216327AA - PHEV]

E. HOOD LOCK KIT⁽¹⁴⁾ Keeps your engine compartment safe from intrusion. The lock is the same as production and is keyed to your ignition key. [82215137AC]

F. SIDE WINDOW AIR DEFLECTORS. Reduce wind noise and allow windows to be open even during inclement weather. [82215372AB - Two door] [82215368AB - Four door]

GRAB HANDLES. Attach to the front or rear sport bar and are made of steel with a sculpted overmould to fit your hand. Feature the Jeep grille logo. Set of two per kit.

G. FRONT. [82219166AA]

H. REAR. [82219174AA]

All disclosures can be found on the last page.



F



G



H

[INTRODUCTION](#)[OFF-ROAD](#)[WHEELS AND TIRES](#)[TOPS](#)[FLOOR MATS](#)[INTERIOR](#)[TOWING](#)[EXTERIOR](#)[EV](#)[OFFERINGS](#)

JEEP® RUBICON® 4xe IN GRANITE CRYSTAL

FREE2MOVE CHARGE LEVEL 2 EV CHARGER⁽¹⁵⁾



Home charging is now simple and quick. This 40-amp home charging station can deliver a full charge in just over two hours – that’s up to six times faster than previous at-home charging systems.⁽¹⁶⁾ Not only does this system hold a coveted Energy Star Certification, but it’s compact, lightweight and can accommodate either plug-in or hardwired installation. Plus, it’s weatherproofed for outdoor/indoor charging and comes with a 7.6-m (25-foot) cable. The Smart Grid optimization allows you to reduce energy costs by charging at low-rate times and potentially participate in available programs that can further lower the cost of owning an EV. For more information, visit [Hybrid Vehicle Charger | Official Mopar® Site \[82219081AB \]](#)

All disclosures can be found on the last page.





OFFICIAL MERCHANDISE

You'll find everything from apparel to lifestyle pieces and specialty goods, all handpicked and of the highest quality! Sign up to receive special offers and updates.

www.stellantisgear.ca

NO ONE BUT MOPAR.®

WHEN YOU DRIVE A JEEP® BRAND VEHICLE, YOU'RE NOT JUST PART OF THEIR FAMILY, YOU'RE A PART OF OURS – THE MOPAR® FAMILY. IN OUR FAMILY, WE TAKE CARE OF EACH OTHER. WE BELIEVE SERVICE ISN'T JUST ABOUT TUNE-UPS AND PARTS, IT'S ABOUT COMPLETE CUSTOMER CARE.

HERE'S HOW WE TAKE YOUR OWNERSHIP EXPERIENCE TO THE NEXT LEVEL.



MOPAR.® OWNER'S SITE

Get all of the resources you need to make owning your Chrysler, Jeep®, Dodge, Ram or FIAT® Brand vehicle the best experience possible. Schedule service directly with your preferred retailer, create a custom online dashboard tailored to you and your vehicle, and access personalized resources, including your Owner's Manual, Vehicle Health Report, special offers and more – anytime, anywhere. Register today at mopar.com

www.mopar.com/en-ca/sign-in



VEHICLE HEALTH REPORT

If your vehicle is equipped with Uconnect®, you can receive an online monthly Vehicle Health Report with an active subscription. The easy-to-follow, colour-coded alerts and health status summary – delivered right to your email or available on demand – can help keep your vehicle running at its best. Learn more and activate today.

www.mopar.com/en-ca/my-vehicle/vehicle-health-report/details



MOPAR. EXPRESS LANE SERVICE

We're here to help you properly maintain and care for your vehicle. Our certified technicians are trained to know your vehicle best, and our Mopar. Express Lanes are set up to get your maintenance needs handled quickly and your vehicle back on the road again. For expert service and more, always be sure to choose Mopar.

www.mopar.com/en-ca/services/express-lane



MOPAR. VEHICLE PROTECTION PLANS

A full portfolio of vehicle protection plans designed to meet the needs of your unique ownership experience is available and honoured at all FCA Canada Inc. retailers. We stand behind every extended protection plan with certified, factory-trained technicians and the use of original equipment parts. Ask for a Mopar. Vehicle Protection Plan at your retailer or visit mopar.ca

www.mopar.com/en-ca/services/mopar-vehicle-protection



INTRODUCTION

OFF-ROAD

WHEELS AND TIRES

TOPS

FLOOR MATS

INTERIOR

TOWING

EXTERIOR

EV

OFFERINGS



jeep.ca | mopar.ca

1 Check local laws on installation and use. **2** Jeep, Performance Parts Lift Kits, Functional Beadlock Ring Kit, Tube Doors without Mirrors and Off-Road Lights are aftermarket only and may not be installed by a Chrysler, Dodge, Jeep, or Ram retailer on any vehicle prior to its first retail sale and may not be sold or financed in conjunction with the sale of a new vehicle. FCA Canada Inc. does not authorize the installation of these parts on any vehicle prior to its first retail sale. **3** Off-Road Lights must remain turned off, or covered, on public roadways. **4** Kit works with Electronic Stability Control (ESC), although unique alignment specifications are required. **5** Mopar Performance Parts are sold "as is" unless otherwise noted. **6** Do not attempt water fording unless depth is known and consistent with the vehicle's water fording rating in the Owner's Manual. Traversing water can cause damage that may not be covered by the new vehicle warranty. Always off-road responsibly in approved areas. **7** Do not drive your vehicle on public roads with the doors removed as you will lose the protection they can provide. Tube Door Kits are intended for use during off-road operation only. All occupants must wear seat belts during off-road operation with doors removed. **8** Not compatible with Park-Sense Rear Park Assist. **9** 12-mm offset allows for larger tires. **10** Also works in conjunction with the production Rubicon 392 Beadlock-Capable Wheel. **11** Be sure to follow all instructions in the Owner's Manual for removal of top and doors, and lowering of windshield. Driving with the doors off and windshield down is for off-road use only. **12** Cannot use in conjunction with soft tops or hardtops (except as noted). **13** Check User Guide for hitch type, load capacity and heavy-duty equipment required. Do not exceed rated tow capacity of the vehicle as equipped. Trailer may require items not supplied by Mopar. **14** Check provincial and local restrictions on installation and use. **15** Requires purchase and professional installation. **16** Installation and configuration requirements may apply. Before purchasing or installing the in-home level 2 home charging station, customer should ensure that the system is compatible with their home's electrical system. Electrical system upgrades may be necessary to ensure compliance with all applicable codes and regulations. Please consult a professional installer for full details.

©2024 FCA Canada Inc. All Rights Reserved. Chrysler, Dodge, Jeep, Ram, Mopar, the Jeep grille, Easter Jeep Safari, Mopar Vehicle Protection, Park-Sense, Rubicon, Sahara, Trail Rated, Uconnect, Willys and Wrangler are registered trademarks, and Trail Rail is a trademark of FCA US LLC. FIAT is a registered trademark of FCA Group Marketing S.p.A., used under licence by FCA US LLC.

BFGoodrich is a registered trademark of Goodrich Corporation. Bilstein is a registered trademark of August-Bilstein GmbH & Co. CORSA is a registered trademark of CORSA PERFORMANCE. Dana and Dana 60 are registered trademarks of Dana Limited. FALKEN is a registered trademark of Sumitomo Rubber Industries, Ltd. Free2move is a registered trademark of Stellantis N.V. iPhone is a registered trademark of Apple Inc. Katzkin and the Katzkin logo are registered trademarks of Katzkin Leather Interiors, Inc. Michelin is a registered trademark of Michelin North America, Inc. Sunrider is a registered trademark of Bestop, Inc. Torx is a registered trademark of the Camcar Corporation, division of Textron Industries. WARN, the WARN logo and Spydura are registered trademarks of Warn Industries. All other trademarks are the property of their respective owners.

Since the time of publication, some of the information you'll find in this catalogue may have been updated. The appearance of accessories shown may vary depending on vehicle application. See your retailer for the latest Mopar product information. Visit the Mopar website at mopar.ca

Published 08/2024