



2025 RAM 1500
AUTHENTIC ACCESSORIES



HOW TO NAVIGATE

MENU

TOUCH/CLICK THE THREE-LINE MENU ICON IN THE TOP NAVIGATION BAR TO EXPLORE AVAILABLE CONTENT DESTINATIONS, SETTINGS AND HELP

TURNING PAGES

TOUCH/CLICK THE ARROWS ON EITHER SIDE OF THE BROCHURE

ZOOM

DOUBLE-TAP/CLICK TO ZOOM IN AND OUT OF THE BROCHURE

ALT TEXT

FOR ALTERNATIVE TEXT, PLEASE CLICK ON THE  ICON LOCATED ON EACH PAGE



MOPAR®

WE BUILT IT.
WE KNOW IT.

AS AN OWNER OF A NEW RAM 1500 TRUCK, WE WANT TO SAY, CONGRATULATIONS. WE ALSO WANT TO WELCOME YOU TO MOPAR® – THE OFFICIAL SERVICE, PARTS AND CUSTOMER CARE PROVIDER FOR ALL RAM BRAND VEHICLES. WHILE THAT'S OUR OFFICIAL ROLE, WE'RE BEST KNOWN FOR BEING THE ORIGINAL EQUIPMENT SUPPLIER FOR PARTS AND ACCESSORIES THAT LET YOU PERSONALIZE YOUR RIDE, BOOST YOUR VEHICLE'S PERFORMANCE OR TAKE ITS CAPABILITY TO THE NEXT LEVEL.

WE WELCOME YOU TO EXPLORE OUR SELECTION OF AUTHENTIC RAM BRAND PARTS AND ACCESSORIES AVAILABLE THROUGH YOUR LOCAL RAM RETAILER OR ONLINE AT [MOPAR.CA](https://www.mopar.ca)

MOPAR® IS ORIGINAL EQUIPMENT

+ EXCLUSIVELY ENGINEERED AND DESIGNED to complement your vehicle without compromising its aesthetic, functionality and performance

+ FACTORY ORIGINAL EQUIPMENT must adhere to a strict standard of testing

+ WE ONLY USE HIGH-QUALITY MATERIALS because we know that our parts and accessories will impact the appearance, durability and value of your vehicle for years to come

+ ONLY MOPAR HAS DIRECT ACCESS to your vehicle's precise specifications

+ EASY-AS-IT-CAN-BE INSTALLATION using existing openings and weld nuts for secure installation of most accessories, helping to protect the structural integrity of your vehicle



INTRODUCTION

BED ACCESSORIES

TOWING

SIDE STEPS

WHEELS

EXTERIOR

INTERIOR

FLOOR MATS

CONVENIENCE

RHO

OFFERINGS



RAM

BOLD AND BEAUTIFUL

RAM 1500 BIG HORN® IN GRANITE CRYSTAL METALLIC FEATURES STAINLESS STEEL TUBULAR SIDE STEPS, CHROME BODYSIDE MOULDINGS, 20-INCH SATIN CARBON WHEELS AND SOFT FOLDING TONNEAU COVER

Properly secure all cargo. Always tow within the vehicle's capacity.



TONNEAU COVERS

A. HARD FOLDING TONNEAU COVER.⁽¹⁾⁽²⁾ Features an attractive, low-profile design with rigid panels and a high-strength aluminum frame, providing superior security and protection; a hidden/quick-release latch system that automatically locks panels when shut – simply lock the tailgate to secure the bed; and an advanced sealing technology for weather resistance. Truck can be driven with cover fully closed, partially closed or fully open, providing full bed access. [82215227AE - 5' 7" Bed] [82215225AE - 5' 7" Bed with RamBox®] [82215224AF - 6' 4" Bed]

B. SOFT FOLDING TONNEAU COVER.⁽¹⁾⁽²⁾ Features a larger opening and softer panels than the Hard Folding Tonneau Cover and uses quick-release latches to make operation and removal fast and easy. Cover is constructed with rails built of durable aluminum material for structural strength and a high-quality canvas that can hold up against extreme weather conditions. [82215863AB - 5' 7" Bed] [82215862 - 5' 7" Bed with RamBox] [82215864AB - 6' 4" Bed]

Utility Rails required for use with the 5' 7" Bed with RamBox. [82215810AB]

C. SOFT ROLL-UP TONNEAU COVER.⁽¹⁾ Requiring no special tools or drilling, this top-mount tonneau cover utilizes preset tension controls to keep the cover tight and looking good – year-round and even in the harshest of climates. Straight cross-tubes ensure a smooth, flat appearance when closed, while side dual-paddle latches securely fasten the cover to the bed. [82215254AB - 5' 7" Bed] [82215253AB - 5' 7" Bed with RamBox] [82215255AB - 6' 4" Bed]

D. MANUAL ROLL-UP TONNEAU COVER.⁽¹⁾ Add this rolling cover to your Ram truck for extra protection and peace of mind. Not only is this cover lockable, but the vinyl-over-aluminum design maintains a classic tonneau appearance. The undercarriage is fortified with aluminum and boasts a patented, contoured hinge design for frictionless rotation and theft protection. Best yet, the roll track sits just 177 mm (7 inches) off the cab to still offer plenty of bed space.

Not all part numbers shown. See retailer for additional part numbers by vehicle application.

All disclosures can be found on the last page.



BED MAT AND BED LINERS

A. BED MAT.⁽¹⁾⁽²⁾ Protects and preserves your truck's bed floor and tailgate from dents and scratches. Nylon-reinforced rubber mat removes easily for cleaning. [82215784AB - 5' 7" Bed with RamBox®] [82215785AB - 6' 4" Bed]

B. DROP-IN BEDLINER.⁽¹⁾ Skid-resistant bedliner's ribbed construction helps keep cargo from shifting, promotes water drainage from bed and includes built-in supports to split cargo. The liner is moulded of a high-density polyethylene blend for added durability. Tailgate liner included.

C. SPRAY-IN BEDLINER.⁽¹⁾ Super tough and installed right at the factory. Available exclusively at the time of vehicle order. [Sales Code: XMF]

Not all part numbers shown. See retailer for additional part numbers by vehicle application.

All disclosures can be found on the last page.



A

B

C



TAILGATE DAMPER KIT

Control the opening rate of your Ram 1500 tailgate with this easy-to-install Damper Kit. Designed specifically for handling heavy daily use, this kit releases the tailgate at a controlled rate, allowing you to open it even with your hands full. Works with factory cables on trucks without a damper or power-release functionality. [82215550AB]

POWER-RELEASE TAILGATE KIT

Kit includes two fobs and wiring harness. Part operates tailgate open function only. Compatible Tailgate Damper Kit is available (sold separately). [82216123AC]

BED LIGHT KIT⁽³⁾

Easily installs into the factory-pierced holes on each side of conventional pickup beds to illuminate the cargo area and improve visibility. Includes two lights with integrated on/off switch.

[82215272AD]



MOPAR[®] BED ASSIST HANDLE⁽⁴⁾

Provides a secure hold when climbing in and out of your truck bed. [82215496]

MULTIFUNCTION TAILGATE BED STEP

This retractable step provides a convenient intermediate platform to access the truck bed. A spring-loaded cam allows the step to be easily extended by stepping down on it and retracts with a slight push to stow out of the way. Bed Step is made of high-strength aluminum with an e-coat finish to help protect against rust and corrosion. Mounts to the vehicle frame for secure attachment with no-drill installation and load-rated up to 158 kg (350 lb).

[82216265AB]



SMART DETAILS

BED EXTENDER

Extends the bed with the tailgate down. Flipped inward, it's a convenient divider to keep cargo from sliding to the front of the bed. Cannot be used with RamBox® Cargo Management System. [82215724]



A



B



C



D

A. CARGO BED DIVIDER. Easily adjustable divider is constructed of strong aluminum tubing and is designed for trucks equipped with Pickup Box Utility Rails (sold separately). Divider fits snugly into the slots located along the utility rails, enabling you to secure cargo of various sizes. Cannot be used with RamBox Cargo Management System or the Multifunction Tailgate. [82215481]

B. RAMBOX® CARGO DIVIDERS. Set of three vertical dividers fits in the RamBox side slots to keep cargo organized. Durable, stylish and easy to install/remove. [82215793AB]

C. SPORT UTILITY BARS.⁽⁵⁾ Built of heavy-duty black anodized aluminum, these substantial bars allow for the quick installation of sport and cargo carriers. Bars attach to the Pickup Box Utility Rails (sold separately). [82215789]

D. PICKUP BOX UTILITY RAILS. These anodized aluminum rails attach to the inside walls of the bed and feature adjustable cleats that slide along the rail system to secure cargo of various sizes. Accommodate the Sport Utility Bars and Cargo Bed Divider (sold separately). [82215285AB - 5' 7" Bed] [82215286AB - 6' 4" Bed]

All disclosures can be found on the last page.



INTRODUCTION

BED ACCESSORIES

TOWING

SIDE STEPS

WHEELS

EXTERIOR

INTERIOR

FLOOR MATS

CONVENIENCE

RHO

OFFERINGS



VAODA



EXPAND YOUR CAPABILITY

RAM 1500 BIG HORN® IN BILLET SILVER METALLIC FEATURES MOPAR® UNIQUE WHEEL FLARES, 20-INCH AGGRESSIVE STYLE WHEELS, OFF-ROAD STYLE RUNNING BOARDS, PRO RACK* AND KAYAK RACK*

Properly secure all cargo. * To learn more about the selection of racks and carriers, please see your retailer for details.



TOWING MADE EASY

A. HITCH RECEIVER.⁽⁶⁾ This Class IV Hitch Receiver has a 5,783-kg (12,750-lb) towing capacity with 578-kg (1,275-lb) tongue weight capacity. No rear bumper or fascia trimming or cutting required when installing. This hitch is the same as the production hitch. [82215222AD]

B. BALL MOUNT ADAPTER KIT.⁽⁶⁾ Choose the drop weight that's right for your application. Fits 2-inch receivers. Made of heavy-duty, cold-rolled steel with e-coat primer and powder-coat paint for extreme durability. [82213547 - 50.9-mm (2-inch) Drop] [82213548 - 101.6-mm (4-inch) Drop]

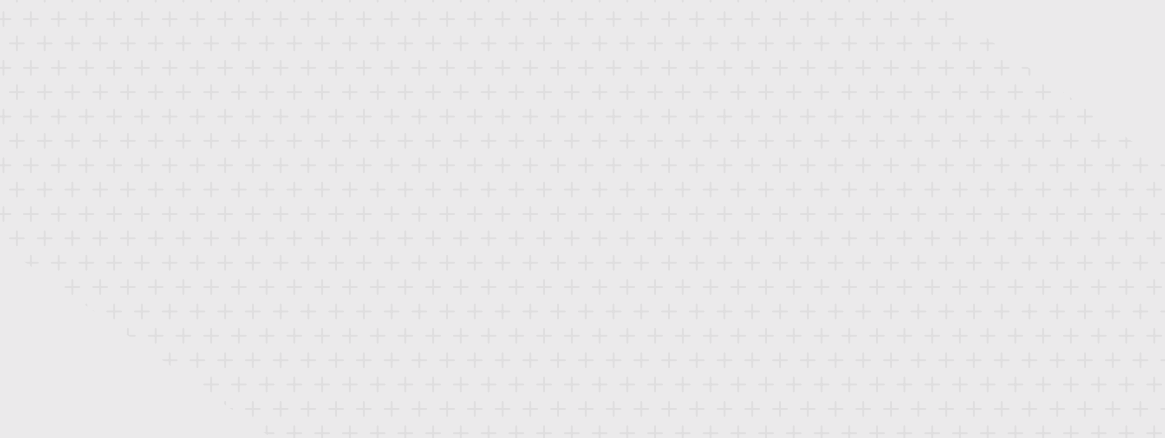
C. TRAILER-TOW BALL KIT.⁽⁶⁾
[82213563 - Chrome 1 7/8-inch Ball with 1-inch Shank]
[82213565 - Chrome 2-inch Ball with 1-inch Shank]

HITCH RECEIVER COVER.⁽⁶⁾ Protects vehicle's hitch opening from the elements and includes a retention strap.

D. RAM'S HEAD LOGO. [82216302AA]

E. MOPAR[®] LOGO. [82208455AB]

Not all part numbers shown. See retailer for additional part numbers by vehicle application.
All disclosures can be found on the last page.



A

D

B, C

E



TELESWIVEL®

A. TELESWIVEL® HITCH RECEIVER.⁽⁶⁾ Easily and quickly attaches your trailer by extending and swiveling the trailer ball – and at an operating angle 25% larger than that of conventional hitches. Available in Standard, Drop Hitch and Adapter Accessory Channel versions. Adapters sold separately (2-inch Ball-Pintle or 2-inch and 2 ⁵/₁₆-inch Dual Ball options). [82215194]

B. TELESWIVEL DROP HITCH.⁽⁶⁾ Allows for height adjustments within an 279.4-mm (11-inch) range (101.6-mm (4-inch) rise and 177.8-mm (7-inch) drop) to accommodate trailers of varying heights. [82215196]

C. TELESWIVEL ADAPTER ACCESSORY CHANNEL.⁽⁶⁾ Allows for installation of various trailering accessories. [82215195]

D. 2-INCH BALL-PINTLE. [82215198]

E. 2 ⁵/₁₆-INCH DUAL BALL. [82215197]

All disclosures can be found on the last page.



INTRODUCTION

BED ACCESSORIES

TOWING

SIDE STEPS

WHEELS

EXTERIOR

INTERIOR

FLOOR MATS

CONVENIENCE

RHO

OFFERINGS



VAODA

STEP UP TO CONVENIENCE

RAM 1500 BIG HORN® IN DELMONICO RED PEARL FEATURES BED STEP, CHROME BODYSIDE MOULDINGS, STAINLESS STEEL TUBULAR SIDE STEPS AND 20-INCH SATIN CARBON WHEELS

Properly secure all cargo.



TUBULAR SIDE STEPS

CONSTRUCTED OF LIGHTWEIGHT ANODIZED ALUMINUM OR POWDER-COATED STEEL AND ARE MANDREL BENT TO ENSURE THE STEPS MAINTAIN A CONSISTENT DIAMETER. SIDE STEPS INCLUDE MOULDED END CAPS AND PROVIDE WIDE SKID-RESISTANT STEPPING SURFACES FOR EASY VEHICLE ENTRY AND EXIT. NO DRILLING REQUIRED.

A. STAINLESS STEEL TUBULAR SIDE STEPS.

CAB LENGTH. (Shown). [82215308AB - Quad Cab®] [82215291AB - Crew Cab]

WHEEL-TO-WHEEL LENGTH. (Not shown). [82215299AB - Quad Cab / 6' 4" Bed]
[82215300AB - Crew Cab / 5' 7" Bed] [82215305AB - Crew Cab / 6' 4" Bed]

B. BLACK TUBULAR SIDE STEPS.

[82216481AA - Quad Cab] [82216482AA - Crew Cab]



RUNNING BOARDS

CUSTOM-DESIGNED TO THE UNIQUE FORMS THAT DISTINGUISH YOUR RAM TRUCK. RUNNING BOARDS FEATURE A SKID-RESISTANT STEPPING SURFACE FULLY SUPPORTED BY A HIGH-STRENGTH DURABLE SUBSTRUCTURE WITH E-COATED BRACKETS THAT WON'T RUST. AVAILABLE IN A VARIETY OF STYLES. SOLD IN SETS OF TWO. NOT COMPATIBLE WITH FRONT SPLASH GUARDS.

A. POWER RUNNING BOARDS.

[82215288AH - Quad Cab®] [82215287AH - Crew Cab]

B. MATTE BLACK-PAINTED CAB LENGTH RUNNING BOARDS.

[82215294AC - Quad Cab] [82215301AC - Crew Cab]

C. GLOSS BLACK-PAINTED CAB LENGTH RUNNING BOARDS.

[82215510AB - Quad Cab] [82215512AB - Crew Cab]

D. OFF-ROAD STYLE RUNNING BOARDS.

[82215514AC - Quad Cab] [82215508AD - Crew Cab]



**20-INCH
AGGRESSIVE STYLE WHEEL**
[82215260AB]



**20-INCH
BLACK ONYX WHEEL**
[82215262AB]



**20-INCH
SATIN CARBON WHEEL**
[82215263AB]



**20-INCH
LUXURY WHEEL**
[82215261AB]



18-INCH BEADLOCK-CAPABLE WHEEL
19-mm offset allows for larger tires.
Includes Trim Ring.
[82215259AB]



FUNCTIONAL BEADLOCK RING KIT
Shown on 18-inch
Beadlock-Capable Wheel.
[P5160110]



WHEELS



A. TRAILER-TOW MIRRORS. These dual-function, aerodynamic mirrors install quickly and help improve rear visibility when towing trailers or campers. Featuring one mirror paired with a minor wide-view mirror, the huge 177x279-mm (7x11-inch) design operates vertically when trailering and flips to horizontal for everyday driving convenience. [82215276AD]

B. WHEEL LOCKS. Include four chrome-plated lug nuts and a special-fitting key. [82212564AA]

C. LICENCE PLATE FRAME KIT. Stainless steel in satin black with Mopar® logo valve stem caps and logo key chain. [82215850]

D. SPARE TIRE LOCK. [82216081AA]

A**B****C****D**



OFF-ROAD 5-INCH LED LIGHT KIT⁽⁷⁾⁽⁸⁾

This commercial-grade Light Kit provides an exceptionally bright, fully illuminating light source needed for safe off-road driving. Light Kit is steam-pressure washer-capable and also vibration-, shock- and EMC-tested. The cast-aluminum housing ensures proper heat dissipation and long-term durability. Kit contains two or four off-road 127-mm (5-inch) LED lights, light covers with Mopar logo, wiring harness and switch. [82215274AE - Set of Two] [82216514AA - Set of Four] Works with Mopar Light Mounting Brackets (sold separately).

[82216127AA - 57.1-mm (2 ¼-inch) for Mounting to RamBar]

SIDE WINDOW AIR DEFLECTORS

Acrylic, tinted deflectors follow the contours of the windows and allow them to be partially open, even during inclement weather.

[82215477 - Quad Cab®] [82215478 - Crew Cab]

CAB PROTECTOR RACK⁽⁹⁾

Constructed of industrial-grade steel providing excellent cab protection from shifting loads in the bed of the truck. Easy, no-drill installation into existing stake hole pockets. [82215495AC] Works with Mopar® Off-Road 5-inch LED Light Kit (sold separately). [82215274AE]



FRONT AIR DEFLECTOR

Deflects road debris, dirt and insects away from vehicle's hood and windshield.

[82215475 - Chrome] [82215476 - Matte Black]



SPLASH GUARDS

DESIGNED EXCLUSIVELY FOR THE RAM 1500, THESE GUARDS HELP PROTECT THE LOWER BODYSIDE PANELS FROM DAMAGE CAUSED BY GRAVEL, SALT AND ROAD DEBRIS. AVAILABLE FOR RAM 1500 MODELS (WITH AND WITHOUT WHEEL FLARES).

A. FRONT SPLASH GUARDS.⁽¹⁰⁾

[82215488AC - with Fender Flares] [82215487AC - without Fender Flares]

B. REAR SPLASH GUARDS.⁽¹⁰⁾

[82219073AA - with Fender Flares] [82219072AA - without Fender Flares]

C. REAR HEAVY-DUTY SPLASH GUARDS.⁽¹⁰⁾

[82219070AA - with Fender Flares] [82219071AA - without Fender Flares]

FRONT HEAVY-DUTY SPLASH GUARDS.⁽¹⁰⁾ (Not shown).

[82219131AA - with Fender Flares] [82219132AA - without Fender Flares]

Not all part numbers shown. See retailer for additional part numbers by vehicle application.

All disclosures can be found on the last page.



A

B

C



ADDING MORE PERSONALITY

IT'S ALL ABOUT ADDING CHARACTER AND PERSONALITY – AND THESE BODYSIDE AND HOOD GRAPHICS DO IT. MOPAR® GRAPHICS ARE DESIGNED TO ENHANCE THE CURVES AND LINES OF YOUR RAM 1500 AND HAVE BEEN TESTED TO WITHSTAND ALL THE ELEMENTS. PROFESSIONAL INSTALLATION RECOMMENDED. HOOD GRAPHIC WORKS IN CONJUNCTION WITH THE STANDARD HOOD.



A. BLACK HOOD GRAPHIC, SPORT HOOD. [82215534AB]

B. GREY METALLIC BODYSIDE GRAPHIC.
[82215529AB - Quad Cab® / 6' 4" Bed] [82215532AB - Crew Cab / 5' 7" Bed]

C. BLACK METALLIC BODYSIDE GRAPHIC.
[82215531AB - Quad Cab / 6' 4" Bed] [82215530AB - Crew Cab / 5' 7" Bed]
[82215816AB - Crew Cab / 6' 4" Bed]

B

C



KATZKIN[®] LEATHER INTERIORS

Handcrafted and professionally designed leather-trimmed interior options. Shown in Black featuring the Ram's Head logo with Maraschino contrast stitching and perforated leather centre panels. Ask your retailer for more information.



WELL-CRAFTED AND CURATED

A. SEAT COVERS. Tailored for a perfect fit, these fabric covers won't block seat controls while protecting original upholstery from dirt and damage. Easily removable for washing and feature the Ram's Head logo. [82215462 - Front Split Bench Seats] [82215463 - Front Bucket Seats] [82215472 - Rear Bench Quad Cab®] [82215474 - Rear Bench Crew Cab]

B. DOOR SILL GUARDS. Additional protection against scratches and scuffs. They feature a laser-etched Ram logo on front-door guards. Available in three finishes.

LIGHT FROST. (Shown). [82215705AB - Quad Cab] [82215703AB - Crew Cab]

BLACK. (Not shown). [82215420AB - Quad Cab] [82215419AB - Crew Cab]

MOUNTAIN BROWN. (Not shown). [82215706AB - Quad Cab] [82215704AB - Crew Cab]

C. WIRELESS CHARGING PAD. Charging made quick and easy and without use of wires when a compatible phone is placed within charging surface of the pad. Professional installation recommended. Not compatible with all centre consoles. [82215150AG]

Not all part numbers shown. See retailer for additional part numbers by vehicle application.



B

C



INTRODUCTION

BED ACCESSORIES

TOWING

SIDE STEPS

WHEELS

EXTERIOR

INTERIOR

FLOOR MATS

CONVENIENCE

RHO

OFFERINGS



VAODA



MOPAR[®] HAS YOU COVERED

Ram 1500 features All-Weather Floor Mats.



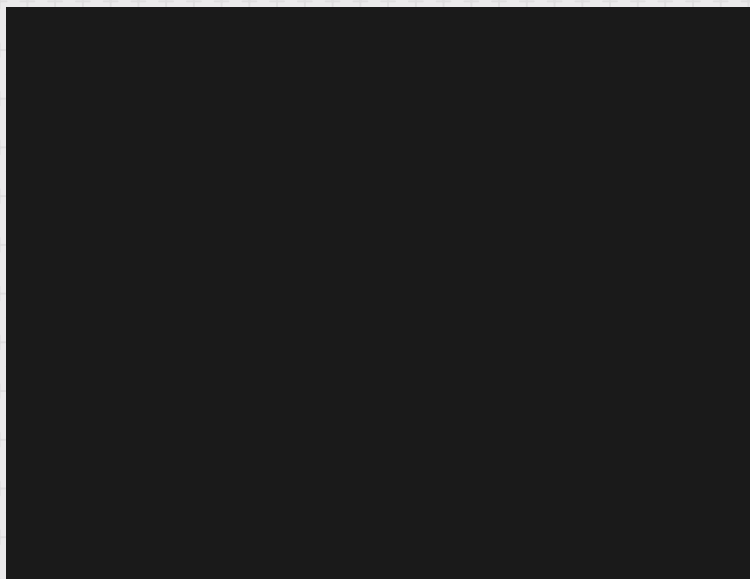
A



B



C



D



E



F

ALL-WEATHER FLOOR MATS

THESE CUSTOM, BUCKET-STYLE MATS OFFER MAXIMUM COVERAGE AND PROVIDE DEEPER CHANNELS TO TRAP AND PROTECT YOUR FLOOR FROM WETNESS, SALT, MUD, DIRT AND GRIME.

CREW CAB.

A. BLACK WITH RED RAM'S HEAD LOGO.⁽¹¹⁾
[82216269AB]

B. BLACK WITH GREY RAM'S HEAD LOGO.⁽¹¹⁾
[82215422AD]

C. BLACK. [82215321AD]

D. BROWN. [82215320AD]

QUAD CAB.[®]

E. BLACK WITH RED RAM'S HEAD LOGO.⁽¹¹⁾
[82216268AB]

F. BLACK WITH GREY RAM'S HEAD LOGO.⁽¹¹⁾
[82215421AD]

BLACK. (Not shown). [82215323AD]

BROWN. (Not shown). [82215322AD]

Not all part numbers shown. See retailer for additional part numbers by vehicle application.
All disclosures can be found on the last page.





PREMIUM CARPET FLOOR MATS

PROTECT YOUR VEHICLE'S FOOTWELL CARPET. MATS FEATURE THE RAM'S HEAD LOGO. FRONT AND REAR MATS SOLD SEPARATELY.

A. FRONT. [82215405 - Black] [82215407 - Brown]

B. QUAD CAB,® REAR. [82215411 - Black] [82215410 - Brown]

C. CREW CAB, REAR. [82215409 - Black] [82215412 - Brown]

Not all part numbers shown. See retailer for additional part numbers by vehicle application.



A



B



C

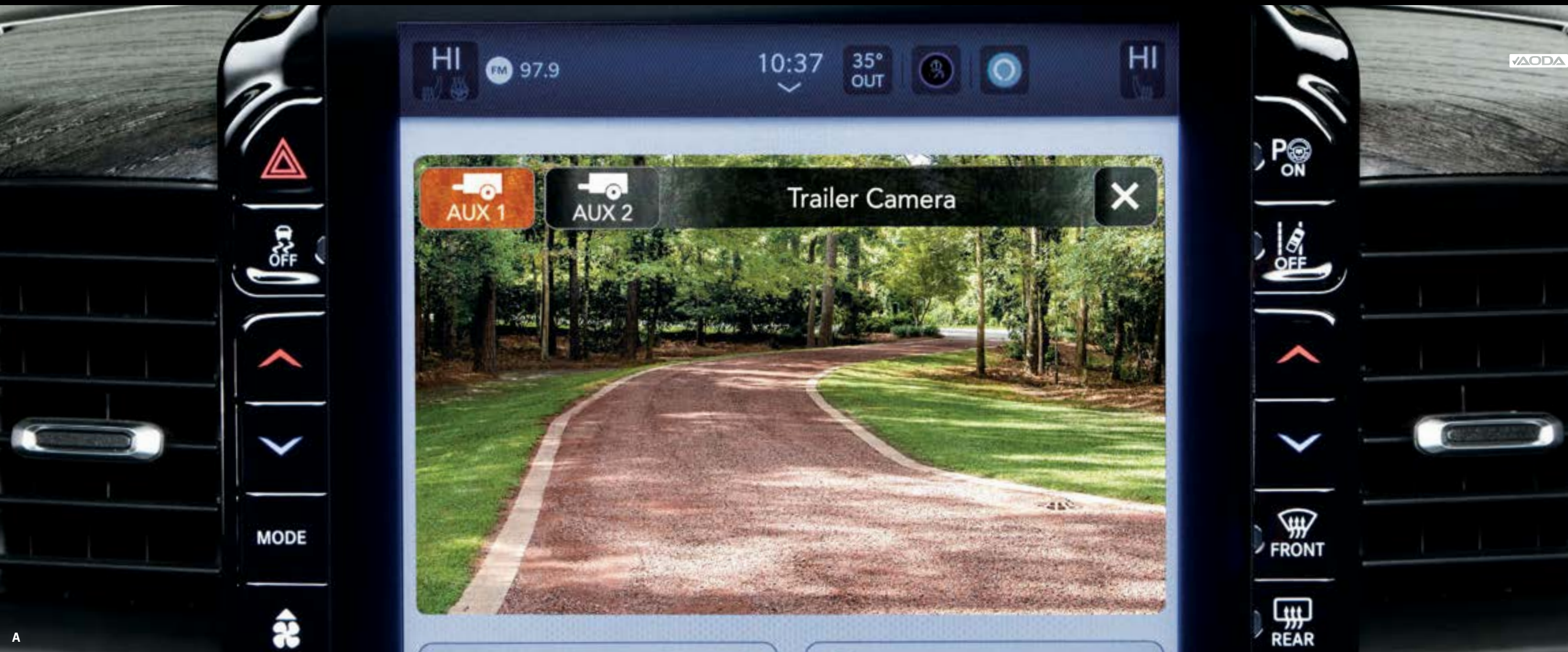
**A****B****C**

FOR YOUR CONVENIENCE

A. FOLD-OUT UNDERSEAT STORAGE. When your truck doubles as a mobile office, keeping miscellaneous tools, paperwork and other travel items neatly stored is essential. This unit is designed to fit underneath the rear seat of your Ram 1500 while not impeding legroom. [[82216515AB](#)]

B. CARGO BIN LOCKS. Designed for Crew Cab in-floor storage bins, these stainless steel locks install easily to create a secure compartment for storing valuables. [[82211653](#)]

C. LOCKING CONSOLE. Converts your production console into a heavy-duty, lockable storage area for valuables. The insert allows full use of armrest and lid and comes ready to install with no drilling required. [[82215519AC](#)]



A

A. TRAILER CAMERA KIT.⁽¹²⁾ Improves your rearview visibility to help manoeuvre around obstacles with your trailer. Trailer Camera Kit is designed to be used in conjunction with the vehicle Trailer Camera Wiring Prep Kit (sold separately). Kit includes one wired camera with housing, trailer wiring harnesses, one 12-way plug, one 12-way park connector and mounting hardware. Note that the Trailer Camera Kit has dual camera capability but requires purchase of two kits. [**82216068AB**]

B. AUXILIARY SWITCH KIT. Add more functionality to the highly configurable instrument-panel cluster to help control features such as Auto-Level Air Suspension. Kit consists of an auxiliary switch with PDC as a whole (everything needed to install the auxiliary switch and PDC). Trucks will need to be reconfigured with LHL sales code to allow the production switches to function. [**82216449AC**]

Not all part numbers shown. See retailer for additional part numbers by vehicle application.

All disclosures can be found on the last page.



A



B



INTRODUCTION

BED ACCESSORIES

TOWING

SIDE STEPS

WHEELS

EXTERIOR

INTERIOR

FLOOR MATS

CONVENIENCE

RHO

OFFERINGS



VAODA



UNRIVALLED ATTITUDE

RAM 1500 RHO IN BILLET SILVER METALLIC FEATURES OFF-ROAD 5-INCH LED LIGHT KIT, LIGHT MOUNTING BRACKETS, CAB PROTECTOR RACK, BED-MOUNTED SPARE TIRE CARRIER KIT, FUNCTIONAL BEADLOCK RING KIT AND OFF-ROAD STYLE RUNNING BOARDS

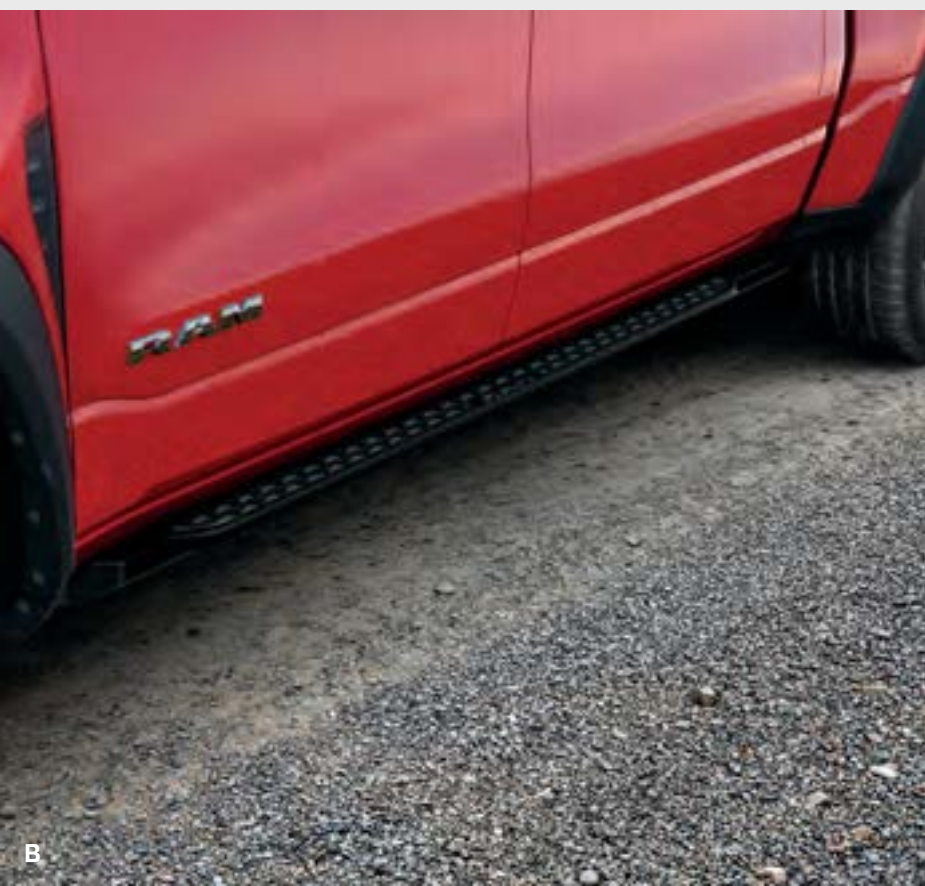
Properly secure all cargo.



RAM 1500 RHO

A. OFF-ROAD STYLE RUNNING BOARDS. Cast-aluminum construction with a rugged texture cover providing anti-slip functionality and an off-road look. Designed to fit close to the vehicle for improved clearance with no drilling and easy installation. [82215508AD - Crew Cab]

B. ROCK RAILS. Help absorb impact and protect lower bodyside panels both on-road and off-road. Constructed of aluminum and attach to the vehicle using high-strength steel brackets. The black powder-coat texture provides protection from erosion while seamlessly blending with the vehicle aesthetics. Available for all Ram 1500 Crew Cab models. [82216579AA]



C. RHO BED STEP. Load-rated for up to 258 kg (350 lb), the bed step features an articulating arm that lowers for easy access to the truck bed and retracts to a stored position with a gentle push – giving an out-of-the-way look within the bumper. Applicable only to Ram 1500 RHO vehicles. [82216598AC]

D. ALL-WEATHER FLOOR MATS. These custom, RHO bucket-style mats offer maximum coverage and provide deeper channels to trap and protect your floor from wetness, salt, mud, dirt and grime. Available in black featuring the red Ram's Head logo. [82216412AA]

Not all part numbers shown. See retailer for additional part numbers by vehicle application.



OFFICIAL MERCHANDISE

You'll find everything from apparel to lifestyle pieces and specialty goods, all handpicked and of the highest quality! Sign up to receive special offers and updates.

www.stellantisgear.ca

NO ONE BUT MOPAR.[®]

WHEN YOU DRIVE A RAM BRAND VEHICLE, YOU'RE NOT JUST PART OF THEIR FAMILY, YOU'RE A PART OF OURS – THE MOPAR[®] FAMILY. IN OUR FAMILY, WE TAKE CARE OF EACH OTHER. WE BELIEVE SERVICE ISN'T JUST ABOUT TUNE-UPS AND PARTS, IT'S ABOUT COMPLETE CUSTOMER CARE.

HERE'S HOW WE TAKE YOUR OWNERSHIP EXPERIENCE TO THE NEXT LEVEL.



MOPAR[®] OWNER'S SITE

Get all of the resources you need to make owning your Chrysler, Jeep[®], Dodge, Ram or FIAT[®] Brand vehicle the best experience possible. Schedule service directly with your preferred retailer, create a custom online dashboard tailored to you and your vehicle, and access personalized resources, including your Owner's Manual, Vehicle Health Report, special offers and more – anytime, anywhere. Register today at mopar.com

www.mopar.com/en-ca/sign-in



VEHICLE HEALTH REPORT

If your vehicle is equipped with Uconnect[®], you can receive an online monthly Vehicle Health Report with an active subscription. The easy-to-follow, colour-coded alerts and health status summary – delivered right to your email or available on demand – can help keep your vehicle running at its best. Learn more and activate today.

www.mopar.com/en-ca/my-vehicle/vehicle-health-report/details



MOPAR[®] EXPRESS LANE SERVICE

We're here to help you properly maintain and care for your vehicle. Our certified technicians are trained to know your vehicle best, and our Mopar[®] Express Lanes are set up to get your maintenance needs handled quickly and your vehicle back on the road again. For expert service and more, always be sure to choose Mopar.

www.mopar.com/en-ca/services/express-lane



MOPAR[®] VEHICLE PROTECTION PLANS

A full portfolio of vehicle protection plans designed to meet the needs of your unique ownership experience is available and honoured at all FCA Canada Inc. retailers. We stand behind every extended protection plan with certified, factory-trained technicians and the use of original equipment parts. Ask for a Mopar[®] Vehicle Protection Plan at your retailer or visit mopar.ca

www.mopar.com/en-ca/services/mopar-vehicle-protection



INTRODUCTION

BED ACCESSORIES

TOWING

SIDE STEPS

WHEELS

EXTERIOR

INTERIOR

FLOOR MATS

CONVENIENCE

RHO

OFFERINGS



ramtruck.ca | mopar.ca

1 Shown on 5' 7" bed. **2** Does not work with the Multifunction Tailgate. **3** Not compatible with the Spray-In Bedliner. **4** Does not work with the RamBox® Cargo Management System. **5** Not available for vehicles with the RamBox Cargo Management System. **6** Check User Guide for hitch type, load capacity and heavy-duty equipment required. Do not exceed rated tow capacity of the vehicle as equipped. Trailer may require items not supplied by Mopar®. **7** Off-Road Lights are aftermarket only, may not be installed by a Chrysler, Dodge, Jeep®, Ram or FIAT® retailer on any vehicle prior to its first retail sale, and may not be sold or financed in conjunction with the sale of a new vehicle. FCA US LLC does not authorize the installation of these parts on any vehicle prior to its first retail sale. **8** Off-Road Lights must remain turned off, or covered, on public roadways. **9** Not compatible with the RamBox Cargo Management System or Multifunction Tailgate. **10** Not available for Dual-Rear-Wheel models. **11** Applicable only for Ram 1500 Rebel® models. **12** Always check entire surroundings visually before proceeding.

©2024 FCA Canada Inc. All Rights Reserved. Chrysler, Dodge, Jeep, Ram, Mopar, the Ram's Head logo, Big Horn, Mopar Vehicle Protection, Quad Cab, RamBox, Rebel and Uconnect are registered trademarks of FCA US LLC. FIAT is a registered trademark of FCA Group Marketing S.p.A., used under licence by FCA US LLC.

FALKEN is a registered trademark of Sumitomo Rubber Industries, Ltd. Goodyear is a registered trademark of The Goodyear Tire & Rubber Company. Katzkin and the Katzkin logo are registered trademarks of Katzkin Leather Interiors, Inc. Nexen is a registered trademark of Nexen Tire Corporation. TeleSwivel is a registered trademark of TeleSwivel, LLC. Thule is a registered trademark of Thule Group. All other trademarks are the property of their respective owners.

Since the time of publication, some of the information you'll find in this catalogue may have been updated. The appearance of accessories shown may vary depending on vehicle application. Visit your Ram retailer for the latest Mopar product information. Visit the Mopar website at mopar.ca

Published 08/2024